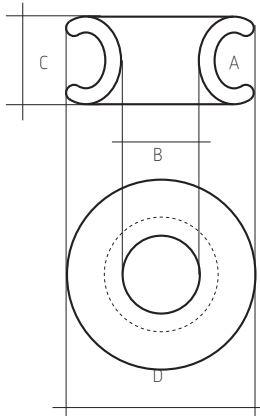


# ROPEYE SLR

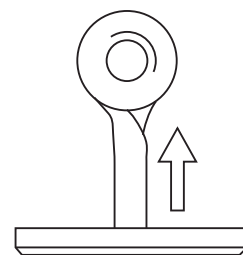
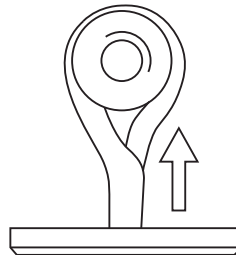
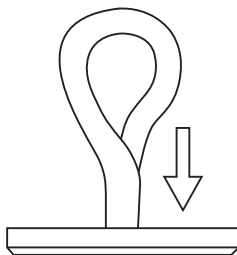
Ropeye Self-Locking Rings made of Anodised Aluminium are specially designed to lock the rope naturally, inside the ring channel. Ropeye Self-Locking Rings are for single and double braid ropes.



## SLR



| SLR B-A   | A<br>Outside<br>dia mm | B<br>Inside<br>dia mm | C<br>Width<br>mm | D<br>Ring<br>dia mm | Material           |
|-----------|------------------------|-----------------------|------------------|---------------------|--------------------|
| SLR 10-7  | 7                      | 10                    | 11               | 24                  | Anodised Aluminium |
| SLR 14-10 | 10                     | 14                    | 15               | 34                  | Anodised Aluminium |
| SLR 20-14 | 14                     | 20                    | 20               | 46                  | Anodised Aluminium |



 **Ropeye**<sup>®</sup>

© Ropeye is a registered trademark. All rights reserved.  
Ropeye technological design is patented.

[www.ropeye.com](http://www.ropeye.com)